

# TRANSFORM

TRANSFORMING FUTURES TODAY

## STARTING A JOURNEY

MOM SPOTLIGHT:  
KA'DREA HARRISON, PG 4

## ANNUAL REPORT

2022 FINANCIAL STATEMENTS, PG 12  
SPECIAL EVENTS, PG 17

## 150 YEARS OF HEALING AND LOVE

DONOR IN THE SPOTLIGHT:  
FRANCISCAN SISTERS OF MARY, PG 18



*30 years of empowering moms*

SPRING 2023



# ALMOST HOME

## Table of CONTENTS

3

### A MESSAGE FROM OUR EXECUTIVE DIRECTOR

Huvona Watkins' Opening Message

4

### STARTING A JOURNEY

Mom Spotlight: Alumna Ka'Drea Harrison

6

### ANNUAL REPORT

The Continuum of Care, pg 8

2022 Financial Statements, pg 12

13

### PARTNERING TOGETHER FOR TRANSFORMATION

Adopt-A-Room: Decorating With a Purpose, pg 15

Community Partner Spotlight: Growing Green, 16

17

### SPECIAL EVENTS

2022 Roundup

18

### 150 YEARS OF HEALING, LOVE, COMPASSION AND SERVICE

Donor Spotlight: Franciscan Sisters of Mary

#### ON THE COVER

**ALMOST HOME** alumna and this year's mom in the spotlight, Ka'Drea Harrison, with her children at Kiener Park in downtown St. Louis. Photographs in Kiener Park, pg 1-5, from Captured Moments by Simmons Photography.





THE FUTURE OF OUR CITY DEPENDS ON US.  
WE CANNOT DO IT WITHOUT YOU.

## A MESSAGE FROM OUR *Executive Director*

**As we close out 2022**, we recognize the many fearless leaders who paved the way for excellence and opportunity for teenage pregnant and parenting moms over the last 29 years.

Entering this organization on an interim basis provided me with so much insight into what has been done and what else can be done. Watching new babies join our family at Almost Home and moms move out to successfully live independently has been exciting and inspirational. As we prepare to celebrate 30 years of serving in 2023, I look forward to shoring up our core programs, reaching more young moms, and expanding services in the St. Louis region.

Our dedicated staff have the desire to make a difference in the lives of others—a difference in the health of our community—by offering amazing therapeutic and case management services.

The need is great.

The future of our city depends on us.

And we cannot do it without you.

Stay tuned for so much more.

Huvona Watkins

**ALMOST HOME** Executive Director



Huvona Watkins, then Interim Executive Director, with MiTek employees while dropping off holiday gifts for the young families at Almost Home.



Ronita Herron, Almost Home's Interim Director of Program and Performance, celebrating holiday spirit week with Huvona. Together, they led Almost Home's transition into the new year and the next 30 years of empowering young moms.

**More from ALMOST HOME** Receive updates from the Almost Home team throughout the year when you subscribe to our newsletter at: [almosthomestl.org/newsletter](https://almosthomestl.org/newsletter) or scan the QR code with your phone.



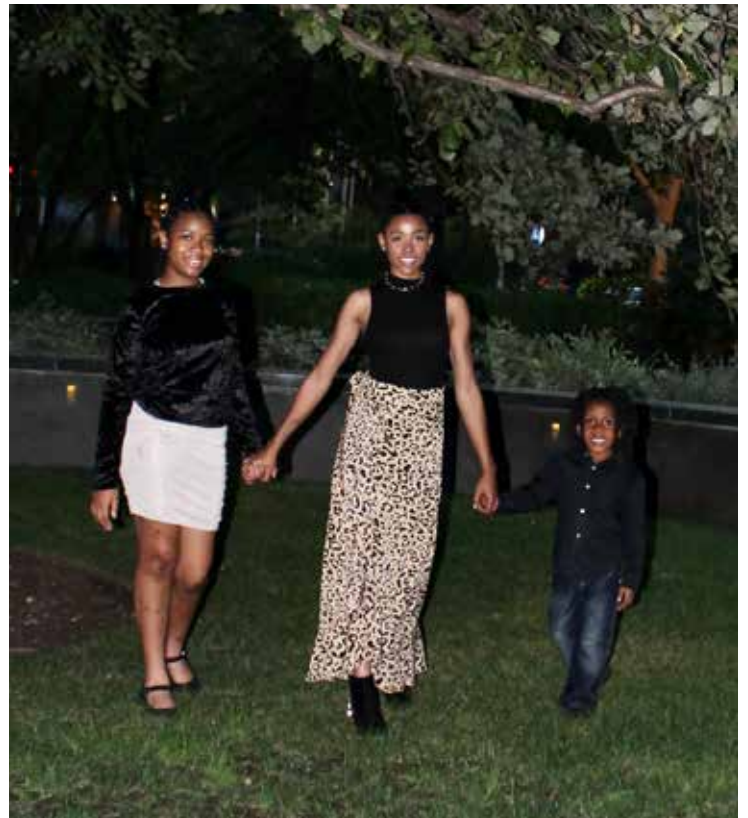
# MOM SPOTLIGHT: KA'DREA HARRISON

## *Starting a Journey*

“**ALMOST HOME** IS LIKE *Adulthood, Motherhood,*  
& *Womanhood* ON TRAINING WHEELS.”

**It has been eleven years** since Ka'Drea came to Almost Home with her 22-month-old daughter, Dezireé. Going through the original challenges that brought her here has given her a new perspective. “Considering my age, wisdom, and capabilities at that time, it would’ve been a lot to have to figure it all out on my own – go to school, heal, and find ways to provide stability for us,” she explains. It’s Ka'Drea’s grandmother who ultimately introduced her to Almost Home, reassuring her that this could be the start of her journey with her daughter and it truly was!

Ka'Drea talks about her experience at Almost Home with fond memories, “I was able to balance motherhood and transition into adulthood in a way that didn’t have to feel or be overbearing.” As our young moms are encouraged to do, Ka'Drea took advantage of Almost Home’s Foundations to Success program. She got hands-on training with parenting classes, personal care, a support system, and assistance leading her to get her high-school diploma. She explains, “My biggest needs were guidance and balance. Being there [at Almost Home], I was shown how I could meet my daughter’s needs as well as my own – mentally, physically, and emotionally.”



Ka'Drea with her children, Dezireé and Antonio, at Kiener Park in downtown St. Louis. Ka'Drea works at BJC as a Transplant Program Assistant and is studying at North Tech to become an LPN.





(From left) Ka'Drea at her high school graduation with Rhonda Gray, then **ALMOST HOME** Executive Director; Ka'Drea's son, Antonio.

By living at Almost Home, Ka'Drea was granted the time to define who she was and who she wanted to be, creating a solid routine and plan for her and her daughter, finishing high school, and growing into a responsible young adult. She is now working at BJC as a Transplant Program Assistant and this fall, she will attend North Tech to become an LPN. She thinks back on her time at Almost Home, saying, "Without Almost Home, I would have had to rush that process in a way that may not have resulted in the foundation or success I have now. I was truly empowered when I needed it most."

and look to life after living in the transitional apartments. Ka'Drea sums it up best here: "Almost Home is like adulthood, motherhood, and womanhood on training wheels. They prepare you to take the training wheels off, and when you are ready, they let you go! And when you look back, they are cheering you on as you continue your journey. You then come to the realization that you're actually on your own but still, not alone."

It is not easy to talk about the struggles that might bring a young mom to our front door, and every story is unique to

"BEING THERE [AT ALMOST HOME], I WAS SHOWN HOW I COULD MEET MY DAUGHTER'S NEEDS AS WELL AS MY OWN – MENTALLY, PHYSICALLY, AND EMOTIONALLY."

Almost Home opened the door for Ka'Drea to participate in a volunteer program at the United Way 211 call center and she was hired soon after, which helped her grow professionally. Before leaving Almost Home, she spoke with the case manager to create a budget and a plan. She transferred to living in our transitional living apartments across the street. She took advantage of Almost Home's alumni classes to help learn how to maintain a household, budget, create goals for her future,

each mom. Ka'Drea told us that success at Almost Home boils down to the moms choosing to participate. There is an urge when you arrive to rebel against the rules or structure, but the moment a mom chooses to embrace it, they concurrently are giving themselves a chance at a better life. She says, "I'm very grateful that I had Almost Home. Their services provided a foundation for two generations to grow and prosper!"

**INVEST IN TRANSFORMATION.** There are several ways to give and we would love to begin a conversation about how we can work together to impact the lives of moms and children at **ALMOST HOME**. Visit [almosthomestl.org/give](https://almosthomestl.org/give) to make a donation today and find information on tax incentives.



# Annual Report 2022

BREAKING THE CYCLE OF POVERTY TWO GENERATIONS AT A TIME

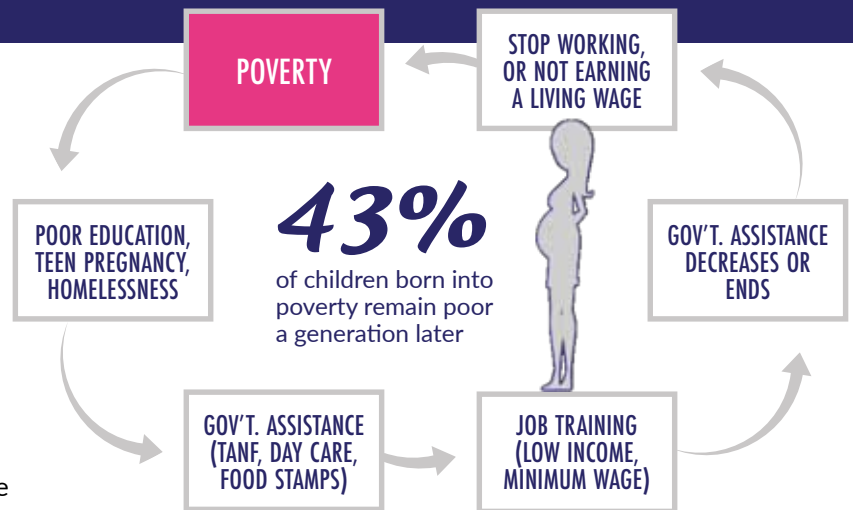




# MISSION AND MILESTONES

ALMOST HOME SERVED **94 families, 76 children, AND 15,703 meals** IN 2022.

**All mothers want the same thing** for their children: a long and healthy life, a safe environment, and a sound education. The teenage mothers who come to Almost Home are special. They come to us pregnant, or already parenting young children while struggling to create their identities and define a life for themselves and their children. An absence of role models, unstable housing, violence, and poor education



The cycle of poverty continues to limit young moms who are fighting just to meet their basic needs.

have set them on a path to continue the cycle of poverty they are experiencing. Additionally, 60% of our moms report experiencing some level of homelessness before coming to Almost Home. But they are highly motivated and ready to do the work required to improve their lives and the lives of their children. Certainly, this generational cycle is not easy to overcome. But, at Almost Home, there is hope.

**BRIANNA** was homeless before entering Foundations to Success (FTS), Almost Home's signature program. The model focuses jointly on the development of both Brianna and her children. Our tailored, family wrap-around programs promote positive parent-child interactions and healthy child development, teach problem-solving skills, and improve the family's support system. We tear down barriers to progress and lead our moms and their families to upward mobility, a stable family life, and a happy, hopeful future.

Members spend up to two years building their confidence, graduating high school, gaining essential skills, and training before completing our program. With the support of the FTS program staff, Brianna gained employment and secured her own apartment in just thirty days!



Brianna's daughter, DaNiyaa J., celebrating her birthday that was made possible by Almost Home's community partner, Sweet Celebrations.

**PICTURE LEFT:** India, young mother and **ALMOST HOME** Transitional Living member, with Heather Jacobs, Development Associate, at the annual 2022 holiday party. Heather has been serving young moms at Almost Home since 2016. All of our staff are hands-on and consider it a great responsibility to walk with moms in the journey of a lifetime.

# THE **ALMOST HOME** CONTINUUM OF CARE

Almost Home's continuum of care was developed out of the need identified in greater St. Louis, MO to provide services beyond transitional living. Creating a continuum allows for our Foundations to Success program to reach a larger population of young moms in need of supportive services.

## FOUNDATIONS *to Success*

| SHELTER SERVICES                     | TRANSITIONAL LIVING   | INDEPENDENT LIVING   | COMMUNITY LIVING   | ALUMNI SERVICES   |
|--------------------------------------|---|--|--|---|
| # of moms served in 2022             | 42  | 10   | 19   | 23  |
| Assists moms with emergency housing. | 16-21 year-old young mothers receive a safe and stable home, food, clothing, baby supplies, case management and therapy, college and career readiness, and life skills courses. | Help young moms increase their self-sufficiency through continued case management and support while living in their own Almost Home apartment. | Community-based and aftercare services allow young moms living in the community to benefit from drop-in services and case management services as needed. | Alumni are eligible for benefits such as case management and therapy. May also volunteer for Almost Home, facilitate empowerment groups, and mentor other moms. |
| 6,259 shelter nights in 2022         |   |  |  |   |

**Almost Home staff are committed** to breaking the cycle of poverty by supporting our young moms and their children. We know that poverty has long lasting and far-reaching negative effects. We also know that without intervention, young families living in poverty will experience health disparities, lack academic progress, and endure social adjustment issues. What does all that really mean? How do we achieve this? What is a two-generation approach to assisting families? Our programs promote opportunities that work for moms and children jointly. We attempt to focus on promoting moms as nurturers but also as breadwinners. Examples include parenting classes, cooking classes, finishing education (including postsecondary) and workforce development. Additionally, we promote early education and supports for their children. Almost Home helps to provide a safe and community focused place to live and the tools to learn and grow, but it is the moms that make the difference. Alumna Ka'Drea says it best, **"It boils down to the moms choosing to participate. The moment a mom chooses to embrace it, she is giving herself a chance at a better life."**

Weekday mornings at Almost Home are dedicated to achieving education and employment goals. Partnerships with school districts, postsecondary institutions, and employment programs help us provide the best option for each mom. To



**2022 MILESTONES** Kayli and her children moved into the **ALMOST HOME's** Independent Living Apartments in April 2022 after completing the Foundations to Success program.





(From left) Heaven with her daughter, Grace, dressed up for **ALMOST HOME**'s annual holiday party; Kyra with her son, Kashton, photographed by Almost Home alumna, Tamra Ransom, at the Almost Home Baby Shower fundraiser.

prepare for employment, each mom builds a resume, researches careers, and participates in mock interviews. Family and Workforce Centers of America provides career counseling and connections to internships. Nineteen of our moms secured their first job or a new job in 2022.

**HEAVEN** came to Almost Home in 2022 and reached her FTS program goals in just a few short months. On her own, she sought out a job at a daycare. She used her learned and innate parenting skills and her genuine love of kiddos to find a job she loves, that allows her to bring her baby, Grace, to work with her!

**KYRA** began working full-time during her stay at Almost Home in 2022. She surpassed her savings goal of \$1,000 and bought a car. This enabled her to get to daycare and her job more efficiently and have the flexibility she needed. Job security is certainly a big and necessary step towards self-sufficiency.

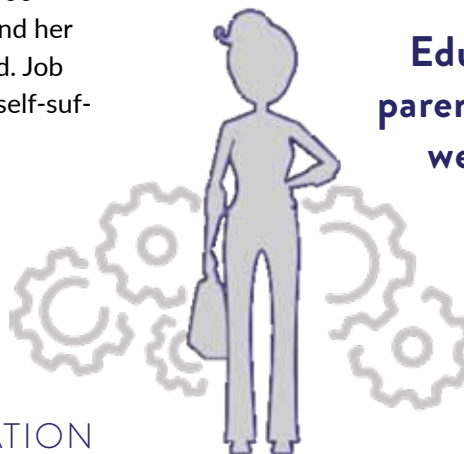
**Almost Home brings stability** to their lives to disrupt the cycle of poverty. When people think of Almost Home, they usually think about the housing and meals we provide for our young moms. That is certainly at the heart of our mission, allowing the moms to feel safe, healthy, and secure with their babies and young children. But we are more than a homeless shelter.

Once our moms know they have a place to live, food, and clothes for themselves and their children, they can focus on their goals. For many this means securing a high school diploma, getting a full-time job, finding daycare, and getting the support of our licensed therapists in one-on-one and group sessions. Our goal is to support their mental health and emotional growth.



**165** *different* **LIFE SKILLS** COURSES

**90%** *of moms enrolled in* CONTINUING EDUCATION



**Education, employment, parenting skills, emotional well-being, and positive relationships are key factors in breaking the cycle of poverty for teenage moms and their children.**

# ALUMNI SPOTLIGHT

## Finding a "Forever Home"

**One of the indicators of success** for our moms is housing stability. Eventually, some of our moms dream of owning their own homes. Homeownership a stretch for many and is especially challenging for low-income, first-time homebuyers who may have difficulty making a sizeable down payment, and these difficulties may be especially pronounced for persons who are Black, Indigenous or people of color.

**JOANNA**, an Almost Home alumna, would not be deterred. With Almost Home staff's help, she created a plan that included completing a first-time home buyer's program through Together Credit Union, setting realistic goals, and keeping to her deadlines. Joanna received mortgage preapproval after completing the program. She began looking for homes right away and she and her family moved into their new home in May 2022. Joanna's family includes her daughter and her foster puppies from Stray Rescue.

"I'M SETTING THE EXAMPLE FOR MY DAUGHTER TO BE INDEPENDENT, **WHILE CREATING GENERATIONAL WEALTH.**"

Joanna says being a homeowner is amazing because not only does she enjoy gardening and landscaping her own yard, but she also knows each month she pays her mortgage that she is building equity in herself and her family.

**Two-generational approaches** build on child development research that indicate parents are critical to healthy children's development. Parenting has such a strong impact on children's development that parental stress particularly caused by pov-



Joanna and her daughter, Julianna, in their "Forever Home." Joanna started working on her landscaping and gardening right after moving into her new home.





Tamra with her son, Ethan, at her alma mater, Webster University. Tamra served as the official photographer at **ALMOST HOME's** 2022 Baby Shower fundraising event.



erty can affect children's learning and development. The first few years of a child's life are critical. Children need stability as well as responsive and nurturing relationships.

When a mom and her children leave Almost Home, they continue to be part of our family. To support them as they move forward, we offer ongoing access to coaching, life-skills classes, and support groups to provide them with much-needed referrals to community resources.

**IN 2022, **ALMOST HOME** STAFF**  
*completed 343 training*  
*hours. Our VOLUNTEERS*  
*served 2,550 hours.*

**TAMRA** has been a part of our Alumni program since 2013. She worked for Almost Home as a Transitional Living Coach because she wanted to give back to the moms what she received when she needed a stable home for her son, Ethan, and herself. Tamra has her Bachelor of Arts degree in Studio Engineering from Webster University and started her own photography business in 2022. We love it when our moms cultivate their talents and find their passion for what they do!

**We are transforming lives.** Children can affect mom's ability to succeed. Our model positively impacts family self-sufficiency and child development. Our transitional home is the foundation for our young moms to learn how to cook, write a resume, interview for a job, set goals and work to achieve them, find daycare for their children, set a budget and manage money, care for their baby, and how to be the best mom they can be. It is hard work for our moms, but they are dedicated to their future and the future of their children. That is what Almost Home is all about.



## CREATE YOUR OWN **ALMOST HOME** FUNDRAISER ON FACEBOOK & INSTAGRAM

Unite your community to end the cycle of poverty! Begin by clicking "Fundraiser" in the left menu of your Facebook News Feed or tap "Add Fundraiser" when creating a post in Instagram.



# FINANCIAL STATEMENTS 2022

## STATEMENT OF FINANCIAL POSITION

| <b>Assets</b>                                       |                     |
|---|---------------------|
| <b>Current Assets</b>                               |                     |
| Cash and cash equivalents                           | \$ 1,228,912        |
| Investments   | 329,262             |
| Accounts receivable                                 | 281,606             |
| Prepaid expenses                                    | 3,475               |
| <b>Total Current Assets</b>                         | <b>1,843,255</b>    |
| <b>Noncurrent Assets</b>                            |                     |
| Property, plant, and equipment, net                 | 780,276             |
| Due from Almost Home Permanent Housing, L.P.        | 383,332             |
| Note receivable—Almost Home Permanent Housing, L.P. | 82,859              |
| <b>Total Noncurrent Assets</b>                      | <b>1,246,467</b>    |
| <b>TOTAL ASSETS</b>                                 | <b>\$ 3,089,722</b> |
| <b>Liabilities and Net Assets</b>                   |                     |
| <b>Liabilities</b>                                  |                     |
| Accounts payable                                    | \$ 31,345           |
| Accrued expenses                                    | 29,665              |
| <b>TOTAL LIABILITIES</b>                            | <b>61,010</b>       |
| <b>Net assets</b>                                   |                     |
| Without donor restrictions                          | 2,697,186           |
| Board designated                                    | 106,660             |
| With donor restrictions                             | 224,866             |
| <b>TOTAL NET ASSETS</b>                             | <b>3,028,712</b>    |
| <b>TOTAL LIABILITIES AND NET ASSETS</b>             | <b>\$ 3,089,722</b> |

## STATEMENT OF ACTIVITY

| <b>Support and Revenue</b>                        |                     |
|---|---------------------|
| Grant income                                      | \$ 332,473          |
| Fees for services                                 | 316,599             |
| Other development revenue                         | 143,700             |
| Donations   | 282,434             |
| Special event revenue, net of expenses            | 120,733             |
| Interest  | 79                  |
| Donations in-kind                                 | 107,668             |
| Other income                                      | 1,781               |
| Net assets released from restrictions             | -0-                 |
| <b>TOTAL SUPPORT AND REVENUE</b>                  | <b>1,305,467</b>    |
| <b>Expenses</b>                                   |                     |
| Program services                                  | 765,100             |
| Management and general                            | 149,828             |
| Fundraising                                       | 130,546             |
| <b>TOTAL EXPENSES</b>                             | <b>1,045,474</b>    |
| <b>CHANGES IN NET ASSETS BEFORE OTHER CHANGES</b> | <b>259,993</b>      |
| <b>Other Changes</b>                              |                     |
| Almost Home Permanent Housing investment activity | (69,161)            |
| (Loss) gain on sale of fixed assets               | (1,209)             |
| Unrealized (loss) gain on investment              | (693)               |
| <b>TOTAL OTHER CHANGES</b>                        | <b>(71,063)</b>     |
| <b>CHANGES IN NET ASSETS</b>                      | <b>188,930</b>      |
| <b>Net Assets, Beginning of Year</b>              | <b>2,839,782</b>    |
| <b>NET ASSETS, END OF YEAR</b>                    | <b>\$ 3,028,712</b> |



**ALMOST HOME** greatly values transparency and accountability—we want you to know everything there is to know about us so you can make an informed decision about supporting or working with us. To access our complete audited financial statements, visit [almosthomestl.org/financials](https://almosthomestl.org/financials).



# Thank you!

We are grateful to our individual, corporate, and organizational donors who support **ALMOST HOME**'s mission. Your gifts provide essential resources and life-changing opportunities that our young moms need on their journey to self-reliance.

## INDIVIDUAL DONORS

### \$10,000 OR MORE

Alexis & Kenneth  
Catalanotto  
Gerald McNeive  
Amanda & Dan Mueller  
Shelly & Pat Roach

### \$5,000 - \$9,999

Emily Fotheringham  
Elizabeth Mehlich  
Dan & Gretchen  
Moorman  
Andre & Natalia Morales  
Penny Pennington  
& Mike Fidler  
Lauren Rice  
Matthew Rossiter  
Jim Tabor  
Lisa VonderHaar

### \$1,000 - \$4,999

Jeanice Baker  
Maryann Copenhaver  
Barbara S. Costigan  
Tom & Danae Domian  
Paul Gund  
Bob Hagen  
Beth Jantz  
Tracy Kelley  
Amanda Kennedy  
Amy Kerkemeyer  
Beth Krumm  
Thomas Kutis III  
Elizabeth McCarter  
Patricia  
Mitchell-Fitzgerald  
Kathy Petersen  
Elizabeth Powitzky  
Dr. Joseph & Billie Jean  
Prusaczyk  
John Reidy  
Eliza Sanders

Mark & Dawn Tamboli  
Michael Thieme  
Claudia Trautmann &  
Ted Christner  
Norma Vogelweid  
Douglas Williams  
David Wilson  
Reona Wise & Family

### \$500 - \$999

Diane Bauhof  
Matthew Bower  
Sarah Burns  
Jan Cordia  
Claire Isselhardt  
Shawn Kendall  
Lamont Lenox  
Kathleen Navin  
Libby Noonan  
Jim & Jen Pagano  
Judith Pautler  
Wanda Pelloquin  
Lakesha Robinson  
Craig Schriewer  
Daniel Tobik  
Christie Tutschulte  
Miriam Wilhelm  
Nancy Wolfberg  
Reema Agarwal  
Suzanne Alberter  
Dianna Amacker  
Dana Ankney  
Kathy AuBuchon  
Robert Bachmann  
Ruth Banks  
Eva Barringhaus  
Lisa Beal  
Marjorie Beer  
Gordon Blaisdell  
Michael Boese

Erin Bookout  
Linda Brown  
John Brueggemann  
Ora Cannady  
Demeisha Carlton  
Steve Carter  
Tracey Carter  
Felicia Childs  
Heidi Clark  
Karen Coughlin  
James Danaher  
Camille Dangerfield  
Valerie Daniels-Carter  
Amy Danuser  
Laci Daugherty  
Lynn Davis  
Tyronica Dowdy  
Barbara Dripps  
David Dunlop  
David Dupree  
Dennis Eckstein  
Susan Esker  
Suzy Farren  
Charlene Ferguson  
Keith Fischer  
Maggie Fowler  
Mary Gallagher  
Kelly Garcia  
Rogelio & Charlene  
Garcia  
Mark Gellman  
Duchess Gibbon  
Norman Goodman  
Juaquin Grace Sr.  
Jamie Guignon  
Linda Haley  
Roxie Hayes  
Lisa Herder  
Ronita Herron  
Teresa & Philip Hess

CeCe Hill  
Dorcas Hinkamp-  
Dunlop  
Jennifer Hoff  
Lee Isselhardt  
Barbara Jones  
William Brian Jones  
Cheryl Jordan  
Cheri Joyce  
Arnette Kerr  
Vanessa Kirkendoll  
Joyce Knobbe  
Joseph Krienert  
Dottie Kroenung  
Amy Kuehn  
Lisa Kurkowski  
Matthew LeDuc  
Annette Lenox  
Estrella Lozada  
Michelle Ludwig  
Matt Luzecky  
Dr. Charlie Mackey Jr  
Jen Marks  
Theresa Martin  
Rose McCarty  
Kermet McLauchlin  
Kathleen McNeal  
Dawn Miller  
Kate Morrison  
Jonna Noonan  
Nora Olsen  
April Orf  
Joan Peroutka  
Patricia Peterson  
Gayle Reneer  
Suzanne Rhodenbaugh  
Courtney Rhodes  
Todd Roth  
Elizabeth Sanders  
Gabriela Scalpone

Tricia Schicker  
Jennifer Schott  
Camille Scott  
Donald Scott  
Kacie Smart  
Gary Smith  
Kevin Smith  
John Stann  
Brian Steiner  
Michael Stewart  
Elizabeth Stratton  
Ruth Sulser  
Celia Sutera  
Norma Vangent  
Shawn Wade  
Molly Walsh  
James Wamhoff  
Huvona Watkins  
Lauren Webber  
Bernadette White  
Alesha Williams  
Annette Winger  
Julie Winkler  
Katie Wiseman  
Quinn Woodard  
Susan M.Young  
Marta Zeis  
**UNDER \$100**  
Joshua Aranda  
Marie Batty  
Natalie Baumann  
Judith Bell  
Manaal Bey  
Viola Biggers  
Maria Blades  
Hillary E. Bomball  
Sonya Borroum  
Brandi Boyd  
Janice Branham  
Kristen Brauch

# INDIVIDUAL DONORS

## UNDER \$100

|                        |                   |                         |                      |                                |
|------------------------|-------------------|-------------------------|----------------------|--------------------------------|
| Madeline Braun         | Morgan Geile      | Ilene Kahn              | Joshua Miller        | Susan Scalise                  |
| Kathryn Brayton        | Caroline Goldberg | Darcy Kinder            | Marion Miller        | Clarinda Schlatter             |
| Pamela Brooks          | Gay Goldenberg    | Gloria Koehler          | S. Miller            | LaToya Scott                   |
| Michael Burns          | Carol Goldstein   | Kate Koenen             | LaJuana Morris       | Stephen Sexauer & Molly Martin |
| Alexandra Bush-Kaufman | Ivy Grant         | Mary Koestner           | Teresa Morrison      | Denise Shelton                 |
| Kanitha Byars          | Debbie Grelle     | Amanda Kruger           | Kanisha Moye         | Xia Simmons                    |
| Sister Mary Chaudet    | James Groenier    | Jonice Langford         | Aminah Muhammad      | Samantha Simpson               |
| Connie Coffey          | Lea Hamilton      | Mary Lawrence           | Antwonisha Murray    | Ericka Simpson-Conner          |
| Vernida Coleman        | Mia Harsley       | Cheryl Lee              | Rhonda Nicholes      | Megan Smith                    |
| Daniel Csik            | Roslyn Harvey     | Kareeta Lenox-Hickerson | Fern Nichols         | Carmen Sorbello                |
| Candace Curtis         | Leah Haskett      | Jean Lopez              | Venita Oatis         | Mary Strouth                   |
| Karen Daugherty        | Trevor Heritage   | Greg Lumsden            | Megan Ottomeyer      | Rita Taylor                    |
| Danette Davis          | Dawn Hieger       | Elyse Mack              | Randy Pace           | Lisa Ternes                    |
| Derron Davis           | Lauren Hofheins   | Kathy Malarkey          | Linda Paradis        | Christine Vinarcsik            |
| Ibura DeHaan           | Emma Hogrebe      | Tony Maltiba            | Andrea Parker        | Ellen Ward                     |
| Valaur Dickerson       | Christie Huck     | Marilyn Marcus          | Chastity Perry-Smith | Ellen Wells                    |
| Victoria Donaldson     | Melissa Humphrey  | Paul Martin             | Shawana Piece        | Melissa Whedon                 |
| Nicole Durbin          | Meghan Hussey     | Kirsten Matthias        | Jan Ponciroli        | Tiffany Whitlock               |
| Susan Ellis            | Julia Hutchinson  | Christine Mcdougell     | Brooke Presley       | Chasity Williams               |
| Weslie Everett         | Gabrielle Hyman   | Heather McIntyre        | Martina Ritchhart    | Tonya Williams                 |
| Lindsey Forsythe       | Carol Iglauer     | Jennifer McMaster       | Brittney Roberson    | Amber Wilson                   |
| Kelli French           | Heather Jacobs    | DeAndrea McMiller       | Rachel Rodenberg     | Katherine & Tony Wright        |
| Rhythm Gandhi          | Shiauna Johnson   | Sarah Melinger          | Kirsten Ross         | Jeff Zeis                      |
|                        | Vivian Johnson    | Lea Mendez              | Victoria Rowe        | Dina Zimmerman                 |
|                        | Katie Jones       |                         | Marj Santhuff        |                                |

# IN-KIND DONORS

|                       |                     |                       |                        |                        |
|-----------------------|---------------------|-----------------------|------------------------|------------------------|
| 4 Hands Brewing Co    | Norman Brown        | Get Well Family       | Elizabeth Mehlich      | Sparks Stone           |
| Ameren Missouri       | Kari Burch          | Chiropractic          | Kirby Monty            | The Gate District West |
| Andy's Frozen Custard | Reshawna Cannon     | Ginger Bay            | Jennifer Moore         | Neighborhood           |
| Ashley Atkins         | Jordan Carr         | Salon & Spa           | Mariah Morgan          | Association            |
| Kathy AuBuchon        | Cascade Asset       | Growing Green Inc.    | Cheryl Nelson          | The Pennywell          |
| Susan Baginski        | Management          | Michelle Gum          | Nestle Purina Women    | St. Louis Downtown,    |
| Jeanice Baker         | Meredith Caul       | Bob Hagen             | In Business Network    | a Hilton Hotel         |
| Ruth Banks            | Felicia Childs      | Herbaria              | Heidi Newton           | Tikun Yoga Studio/     |
| Sharon Barnes         | Donzell Clark       | Amanda Herz           | Libby Noonan           | Tikun Inc.             |
| Beauty Craft          | Maryann Copenhaver  | Hodak's Restaurant    | PAPIN Support Facility | Shanequa Tolliver      |
| Beloved Community of  | Camille Dangerfield | & Bar                 | (Pets And People       | Torshe Triplett        |
| United Methodist      | Briana Davenport    | Ivy Readers           | In Need)               | True Fellowship        |
| Bentley Studio, Ltd   | Diaperminis         | Heather Jacobs        | Tammy Platt            | Church                 |
| Betty Wheeler         | Tyronica Dowdy      | Janae Johnson         | Crystal Prechard       | Morgan Vinyard         |
| Classical Junior      | David Dupree        | Kendra Scott, LLC     | Heather Pruett         | Olivia Wall            |
| Academy               | EnginEARZ USA       | Lydia Kentch          | Raising St. Louis      | Valerie Waters         |
| Big Blue Spark        | Carmen Evans        | Linus Blankets of     | Sara Ramirez           | Chasity Williams       |
| Billionaire Body      | Shalia Ford         | Southwestern Illinois | Georgia Rheinhardt     | Wonder Workers at      |
| Malyna Bland          | Forever 21-Galleria | Lordo's Diamonds      | Pat & Shelly Roach     | St. Clement School     |
| Emily & David Bosch   | Kabrina Forrest     | Jen McClure           | Sigma Beta Xi          |                        |
| Box Lunch-            | Forvis LLP          | Ashley McIntosh       | Sorority, Inc.         |                        |
| Fairview Heights      | Delesha George      | DeAndrea McMiller     | Spectrum               |                        |
| Cynthia Bradly        |                     | Aimee Meentemeyer     | Communications         |                        |



# ORGANIZATIONAL SUPPORT

Aging Well Health Care, LLC  
Ameren Missouri  
American Direct Marketing Resources LLC  
American Family Insurance Dreams Foundation  
BJC Healthcare  
Black Community Investment Initiative  
Blues For Kids Foundation  
Boeing  
BSI Constructors, Inc.  
Burns and McDonnell Foundation  
Cardinals Care  
CASA (Charity Art Silent Auction)  
Chariti Home  
Charles River Labs  
Charter Communications  
Chevron  
Colibri Real Estate  
Dana Brown Charitable Trust  
Dismas House of St. Louis  
Dodd & Clarke Charitable Giving Fund

East Missouri Foundation  
Edward Jones  
Edward Jones Trust Company  
Emerson Charitable Trust  
Engelhardt Family Foundation  
Enterprise Holdings, Inc.  
Fischer-Bauer-Knirps Foundation  
Francis Howell North High  
Franciscan Sisters of Mary  
God's Grace Church-Outreach Ministries  
Good Shepherd Lutheran Church  
Graybar  
Growing Green Inc.  
Hagen Properties  
JE Dunn Construction Company Charitable Fund  
Kendra Scott, LLC  
Knoll Living Trust  
Laborers International Union of North America (LIUNA 110)  
Marian Foundation  
Mary Ranken and Ettie A.

Jordan Foundation  
Mercy Accounts Payable Shared Services  
Mitek, Inc.  
New Growth Horizon Foundation-Proper Brands  
Norman J. Stupp Foundation  
O'Connell Family Fund  
Pershing Charitable Trust  
Pott Foundation Grant  
R.E. Browning Family Foundation  
Red Oak Landscaping, Inc.  
Rent One  
Safety National Re  
Schwab Charitable Fund  
Second Baptist Church of Greater St. Louis, Inc  
Service Club for the Blind  
Simply Chic Jewelry  
Spire Inc.  
SSM  
St. Joseph Parish - Cottleville  
St. Louis Children's Hospital  
St. Louis Christmas Carols Association

St. Louis Community Foundation  
St. Louis Philanthropic Organization  
SUNN  
The Kreilick Family Foundation  
The Schmidt and Barton Family Fund  
TierPoint LLC  
Tisbest Philanthropy  
Trio Foundation of St. Louis  
Trotec Laser, Inc.  
United Way of Greater St. Louis  
United Way of Metropolitan Chicago  
Vatterott Foundation  
Victor and Selene DeLinieri Charitable Foundation  
Walter and Mason Retail, Inc./Altar'd State  
Webb Foundation  
Women's Foundation of Greater St. Louis  
Zielinski & Associates



In 2022, six bedrooms, our living room, and reading nook were updated through Almost Home's Adopt-A-Room program.

Thanks to these groups (and their awesome decorating skills!), **ALMOST HOME** could welcome new families with a beautiful and peaceful place to call home on their road to a better future. We need the support of our community to help every young mom that bravely steps forward to break the cycle of poverty. We were especially inspired to see one of our own, alumna Madeline Boykins, return to adopt her former room with the help of her friends and family.

**THANK YOU ALL FOR SHOWING UP AND TAKING THE TIME TO PARTNER WITH US!**

Almost Home Staff  
BJC Careers  
Ivy Readers  
Madeline Boykins with SIS Inc.  
Phi Nu Zeta-Zeta Phi Beta Sorority, Inc.  
Purina  
Realtist of Metropolitan St. Louis

Shelly & Pat Roach  
Stowers Realty  
The Bookout Family



**How does it work?** Individuals or groups paint and/or decorate a private room or common area—and have your organization recognized above the door! Please contact Heather Jacobs at [hjacob@almosthomestl.org](mailto:hjacobs@almosthomestl.org) or (314) 771-4663 ext. 403.

# COMMUNITY PARTNERS

|   |   |                                    |
|---|---|------------------------------------|
| AARP  | Employment Connections                  | Planned Parenthood                 |
| Affinia Healthcare  | Family and Workforce Centers of America | Prosperity Connections             |
| American Medical Women's Association, Washington University's Chapter | First Baptist Church of Creve Coeur     | Realtist of Metropolitan St. Louis |
| Annie Malone  | Great Southern Bank                     | SIS-Sistas Inspiring Sistas Inc.   |
| BJC Careers   | Home Sweet Home                         | SLATE                              |
| Covenant House  | It's Your Birthday                      | St. Louis Community College        |
| Deaconess Foundation  | Ivy Readers                             | St. Louis Public Schools           |
| DeamHI  | Legal Services of Eastern Missouri      | STL Youth Jobs                     |
| Delivering Good   | Mental Health of America                | Stowers Realty                     |
| Delta Sigma Theta-St. Louis Alumnae Chapter                           | Missouri Poison Center                  | Sweet Celebrations                 |
| Delta Sigma Theta-St. Louis Metropolitan Alumnae Chapter              | Montgomery Bank                         | Vision for Children at Risk        |
|   | Operation Food Search                   | Youth In Need                      |
|   | Parents as Teachers                     |                                    |

## Growing Green COMMUNITY PARTNER SPOTLIGHT



### PARTNERING TOGETHER FOR TRANSFORMATION

We are thankful and honored to have been Growing Green's adopted charity in 2022. For 50 years, Growing Green has been sharing their passion for nature by working with their clients to develop environments that are happy, healthy, productive, and beautiful.

Their employees volunteered to help us plant a garden for the moms to grow and use fresh vegetables in their meals. They taught our moms wreath-making, and held a class on propagating plants. Additionally, Growing Green gifted us plants to use for décor at our Baby Shower event, as well as Christmas Trees to brighten up our facility for the holidays. Moreover, Growing Green hosted vendor events throughout the year, raising over \$4,000 to support **ALMOST HOME!**

We are grateful for Growing Green—we have grown in our green knowledge and can't begin to say enough about how much we appreciate their dedicated time and financial support of the young families at Almost Home.

## 2022 **ALMOST HOME** LEADERSHIP

### BOARD OF DIRECTORS

#### OFFICERS

Lakesha Robinson, President  
Nancy Wolfberg, Treasurer & Finance Committee Chair  
Maryann Copenhaver, Fund Development Committee Chair

#### BOARD MEMBERS

Jeanice Baker  
Michael Boese  
Kanitha Byars  
Robert Hagen  
Zach Hubbard

Matthew Rossiter  
Diona J. Mills  
Daniel Moorman

### EXECUTIVE STAFF

Huvona Watkins, Interim Executive Director  
Tyronica Dowdy, Director of Development  
Julie Garcia, Director of Operations  
Ronita Herron, Interim Director of Programs and Performance

#### HONORARY MEMBER

Sue Engelhardt



# SPECIAL EVENTS 2022

JUNE 12, 2022



The **ALMOST HOME** community came together at our 12th annual Baby Shower Block Party. After a message from Cyan Kelley, Teen Miss Missouri – Princess of America, our guests learned about Almost Home's comprehensive services as they toured our facility. Many were moved by the quality of Almost Home's programming and chose to invest in our work, raising more than \$88,000 to help break the cycle of generational poverty!



(From left) Cyan Kelley, Teen Miss Missouri – Princess of America, with Jeanice Baker, AH board member; Reona Wise, then AH Executive Director, with Lakesha Robinson, AH Board President; AH staff with their children.



(From left) Supporter Diona J. Mills, with Delesha George of Deaconess Foundation; Tyronica Dowdy, AH Director of Development, with Cyan Kelley; Supporter Ivy Grant, Jeanice Baker and Julie Garcia, AH Director of Operations. Photos provided by Almost Home alumna, Tamra Ransom.

## emPOWER virtual fundraising campaign

NOVEMBER 10-11, 2022

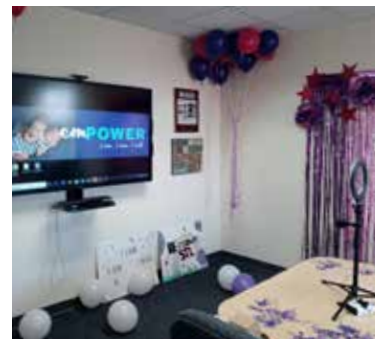
With 204 campaign donors, **ALMOST HOME's** 3rd virtual fundraiser once again surpassed our expectations. Our generous event sponsors quadruple matched every donation for 24-hours, raising \$138,256 to empower young moms on their road to self-sufficiency.

THANK YOU TO  
ALL OUR TEAMS!

Aubuchon-Martin  
Banks Helping Babies  
Board of Directors

Gate District West  
Neighborhood Association  
Growing Green

Team KB  
The Power Squad  
Wise Up!



(From left) Reona Wise, then AH Executive Director, with AH staff; Ronita Herron, Interim AH Director of Program and Performance celebrating in the EmPower photo booth after achieving the fundraising goal; Diane Bauhof, Development Consultant, supported our event volunteers, staff, and board members from our call center.

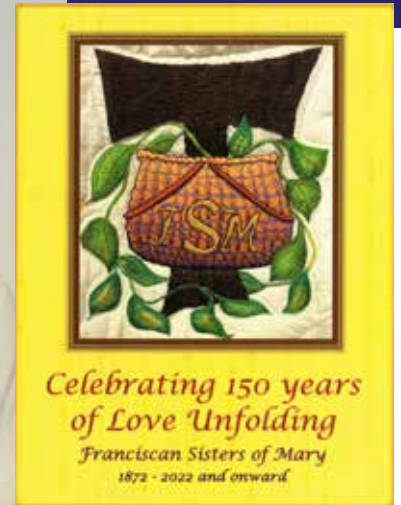
**JOIN US** for our 2023 **emPOWER** event starting at 2pm on November 8th—and celebrate our 30th Anniversary!

For news on upcoming events, signup for our email list at [almosthomestl.org/newsletter](https://almosthomestl.org/newsletter) or follow us on social media.



## DONOR SPOTLIGHT

# Franciscan Sisters of Mary



Franciscan Sisters of Mary Leadership Team presented the Mission Award to **ALMOST HOME** board members and staff. (From left, Sr. Sandra Schwartz, Robert Hagen, Sr. Judith Bell, Reona Wise, Tyronica Dowdy, Sr. Sherri Coleman, Matthew Rossiter, Sr. Susan Scholl.)

## 150 YEARS OF HEALING, LOVE, COMPASSION AND SERVICE.

**Thirty years ago**, Sisters Irene Radtke and Jacinta Elmen-dorf of the Franciscan Sisters of Mary (FSM) acted on their inherent belief in the dignity of women and children, founding Almost Home as an improvement project for homeless single-mother families to learn survival and enhancement skills. In celebration of their 150th Heritage Anniversary in 2022, FSM presented Almost Home with the Mission Award and a generous financial gift. Sister Judy Bell, FSM President and Almost Home board member from 2002 to 2008, emphasized that Almost Home received the award, "as an organization that without a doubt exemplifies FSM values and expresses solidarity with the poor and powerless."

The FSM Sisters' dedicated leadership of the Almost Home team and consistent engagement with the young families since 1993 has been an example of healing and love. They have been involved in many aspects of Almost Home's program, joining in the fun of ice cream socials, celebrations of individual mothers' educational and career achievements, hours of daycare, and simply—but significantly—stopping by to

say hello. Sister Judy remembers meaningful times babysitting four children on her own, from a six month-old baby to a four year-old child. She was gratified to see moms proud of themselves when they came back from their jobs, observing that, "they knew they were special, capable, and that they could do this."

**IN THE SISTERS, YOUNG MOTHERS AT ALMOST HOME FOUND PEOPLE WHO CARED. FOR THE FIRST TIME THEY SAW A PATHWAY OUT OF POVERTY FOR THEMSELVES AND THEIR CHILDREN.**

Through countless diaper drives, Adopt-A-Room decorating, corporate team building days and event sponsorships, the FSM Sisters also established a critical network of partnerships to increase Almost Home's effectiveness in the St. Louis community, including our long-term partnership with SSM Health Care.



**Sign up to be an <sup>ALMOST</sup>HOME volunteer!** **ALMOST HOME** will work with you to craft an experience that helps our moms gain momentum as it adds meaning to you. Start the process now at [almosthomestl.org/volunteer](https://almosthomestl.org/volunteer).



## THE LEGACY OF THE FRANCISCAN SISTERS OF MARY IS ONE OF **SOLIDARITY WITH THE POOR AND POWERLESS.**

The first SSM hospital was started in 1877 by FSM's founding Sisters only five years after arriving in St. Louis from Germany. Though the sisters are once again a small group, their pursuit of systemic change continues through mission impact investing.

In 2014, FSM released sponsorship of Almost Home into the hands of our directors, staff, and board members, empowering the St. Louis community to invest in its future and directly address the needs of teenage moms facing homelessness.

The legacy of the Franciscan Sisters of Mary is one of solidarity with the poor and powerless, touching thousands of people. Almost Home is delighted to be part of their rich history.



Tyronica Dowdy, **ALMOST HOME** Director of Development, with Sr. Vicki Ewers at FSM's 150th Anniversary Mass in 2022.

## VOLUNTEER SPOTLIGHT



Sugandha Bollu celebrating her 133 hours of service in 2022 at **ALMOST HOME**'s annual volunteer appreciation event.

### Meet Sugandha Bollu,

student at Saint Louis University, studying biology and public health—pre-med track, and one of Almost Home's dedicated volunteers.



Sugandha served over 133 hours in 2022! She has creatively contributed to Almost Home's programming and directly supports moms and their children through tutoring and childcare.

*"I learn a lot from the babies and the moms—they inspire and motivate me."*

When asked what her favorite part of volunteering at Almost Home was, Sugandha stated, "when the kids' faces light up when they see me, when the children open up to me and I can brighten their day!"

As a tutor, Sugandha hadn't expected to develop such deep connections with the mothers—so much so that Almost Home also became another home her!



Non-Profit Org  
U.S. Postage  
PAID  
St. Louis, MO  
Permit No. 3687

3200 St. Vincent Ave.  
St. Louis, MO 63104

(314) 771-4663

[ALMOTHOMESTL.ORG](http://ALMOTHOMESTL.ORG)

*30 years of empowering moms*



NOVEMBER 8-9, 2023

**emPOWER**

INVEST IN  
HER FUTURE.

*24-hours to end poverty.*

[ALMOTHOMESTL.ORG/EMPOWER](http://ALMOTHOMESTL.ORG/EMPOWER)



SIGN UP TO BE A MATCHER! Contact Satonya Booker at (314) 771-4663 ext. 415 or email [sbooker@almosthomestl.org](mailto:sbooker@almosthomestl.org).



**ST. LOUIS COUNTY  
CHILDREN'S  
SERVICE FUND**  
*Investing in kids. Creating brighter futures.*

